

# SOHO CLARION

FREE

The Clarion call of The Soho Society · Spring 2017 · Issue 167

**Soho Artisans Issue / Tailoring / Jewellery / Local News**





## BEST AGENT IN LONDON W1



*Awarded to:*

# GREATER LONDON PROPERTIES

*For Customer Experience*



## IN THIS ISSUE

# 2

### CROSSRAIL 2

David Evans looks at the implications of the next crossrail project and the affect it will have on Soho.

# 4

### ARTISANS

Clare Lynch spoke to some of Soho's remaining craftspeople keeping its artisan traditions alive.

# 10

### SOHO NOTICES

A general round-up of what's been going on in Soho

# 12

### WE'RE WATCHING

A general round-up of Planning and Development in Soho.

# 14

### MOSOHO: L'ESCARGOT

The Museum of Soho looks at the history of the first restaurant in Soho to serve snails.

# 16

### SOHO REVIEW

We look at the latest offerings in Soho related Art, Books, Theatre and Food & Drink.

# 21

### SOHO HEALTH CENTRE

We look at the status of the Soho surgery now that it's future has been secured for at least the next 5 years.

# \*

Births Marriages, Deaths 13.  
Ask Augusta 22.  
60 Second Interview 22.  
Map 23.  
Directory 24.  
Crossword 26.

## FROM ST. ANNE'S TOWER

**David Evans**  
Chair, The Soho Society



One of Soho's laments is the loss of its old craft businesses - furniture makers and violin makers, silversmiths and gunsmiths. It is sad indeed that many of these trades and

their specialist skills, are no more in Soho. Soho though is a very successful area, in a great world city, and the loss of these trades is only one part of our story.

Because other crafts are burgeoning. Since 19th century Berwick Street sold fabrics and accessories, fashion has been a hugely important part of Soho. From the Swinging Sixties, with Quant and Hendrix, until today, Palace and Supreme, style-setters have increasingly come to Soho for inspiration, for their look.

Fashion today in Soho is vibrant. From the fabric sellers - Borovick and Misan and others; through the myriad of specialist trades - button-hole makers, coat makers; to world-famous tailors Sir Tom Baker, Chris Kerr, John Pearse and Mark Powell. And interestingly these different businesses, some long-established, others new, are not old enterprises with the clock of technology against them. All are up to date and on

trend; and many indeed are new, with young ground-breaking and passionate and entrepreneurial employees and proprietors. In this issue we celebrate artisans in Soho, old and new, from tailors to jewellers to button hole makers. We hope you enjoy what they have to say.

Standing back, these crafts are yet another strand of Soho's wonderful ecosystem. Another reason why people who are customers or themselves part of the creative industries come to Soho, and while here go to a club, or a restaurant, or a show, or an Italian delicatessen, and contribute more widely to Soho's success.

Keeping the specialness of Soho depends on you too. You can contribute. We are always keen to hear your opinions. And we welcome your involvement and support. Please do get in touch, with opinions or offers of support (at [admin@thesohosociety.org.uk](mailto:admin@thesohosociety.org.uk)).

# CROSSRAIL 2

As Soho still reels from the ongoing Crossrail project, **David Evans** looks at the implications of Crossrail 2.

For the last 10 years Soho has endured the construction of Crossrail 1. Now, uniquely for a London district, it faces in addition the construction of Crossrail 2. It must be incumbent upon Crossrail to do everything in its power to mitigate and minimise the impact of the construction on Soho's residents and businesses.

To do this, as outlined in The Soho Society's consultation submission, there are four areas that Crossrail must address:

- **Consultation and communication**
- **Minimising construction disruption**
- **Optimising pedestrian and traffic flows in the final design**
- **Giving back (where Crossrail would contribute a very small part of Crossrail 2's £30bn budget to Soho's community).**

In the context of the third of these, the final design, we talked last December with Crossrail about their proposed location for Tottenham Court Road station's southern entry/exit. Their proposal is the Curzon site. The block with the Curzon cinema would be demolished, as, to provide a work site, would the adjacent block (between Frith and Dean). It is far from clear to us that this is the best choice, and we asked Crossrail to come

back to us, explaining the basis for this proposal, and the other possibilities they considered. The most important criteria for Crossrail will be engineering feasibility and cost. Ours will be the impact on the residents and businesses and visitors to Soho, both during the construction phase and longer term. There will be a balance to be struck.

Crossrail have now, as promised, come back to us with additional information. In looking at the options they have considered.

## Alignment

By which they mean the underground route the tunnels should take

## Worksites

Where best to locate the above ground areas needed for their works

## Interchange routes

The ease of interchange with other underground lines

## Station entrances

Where best to locate station entrance/exits considering pedestrian flows, heritage impact, and so on.

We will be discussing all these aspects with a range of stakeholders in Soho – both residential and business, and feeding these views back to Crossrail.

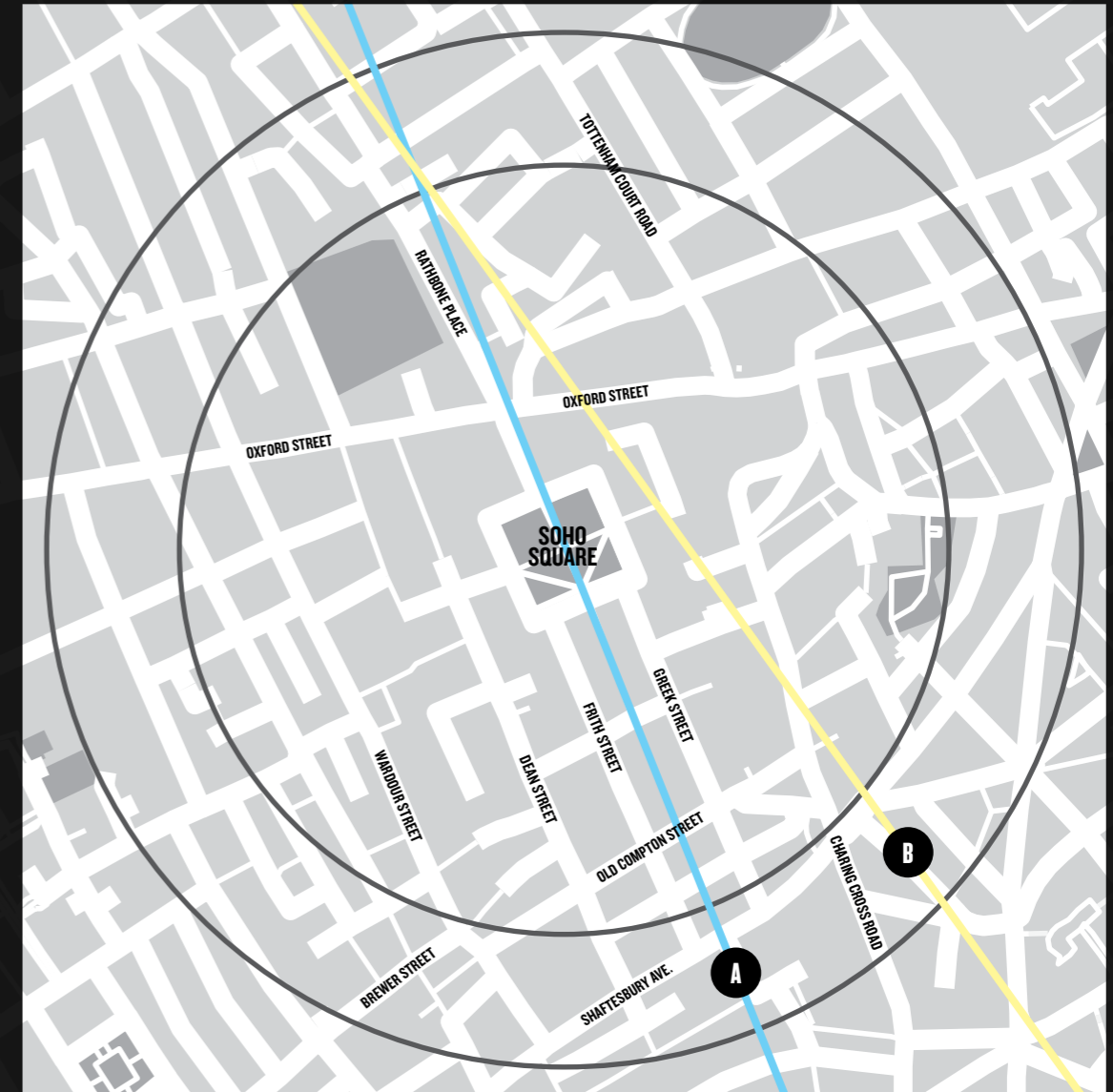
Most important in the first instance though will be Alignment. We had not appreciated that Crossrail considered two route choices, Alignments A and B, illustrated on the map opposite.

Alignment A (in blue) is the proposed route, dropping south from Soho Square, and crossing Shaftesbury Avenue at the Curzon site where, on the Curzon and adjacent block, the proposed worksite and station entry/exit would be.

However Alignment B (in yellow) was an alternative that Crossrail considered. This runs further to the east and would cross Shaftesbury Avenue to the east of Cambridge Circus. This introduces possibilities that the worksite and station entry/exit currently proposed for the Curzon and adjacent blocks would move to the east of the Charing Cross Road, and away from Soho altogether.

Crossrail are opting for Alignment A because B would cause additional engineering complications and costs south, around Victoria. We don't know how significant these are, but we do know what a benefit it would be to Soho, having endured the building of Crossrail 1, not now to have to endure the building works and disruption of another Crossrail worksite and station in Soho.

We will be talking with others in Soho to gather their views. But also then talking with Crossrail about the rationale for Alignment A. Maybe, just maybe, there is a chink of light for Soho.



# ARTISANS

Clare Lynch spoke to some of Soho's remaining craftspeople keeping its artisan traditions alive.

## MONTAGUE EDE Antonia Montague Ede and Deema Abi-Chahine

Antonia Ede and Deema Abi-Chahine met at the London College of Fashion in 2007 whilst studying on the foundation course. Antonia went on to study costume, specialising in tailoring, and Deema studied menswear. They recently moved to 3rd Floor, 76 Brewer Street to start their new ventures. The L-shaped room is divided between space for consultations, cutting and for making. For them it is important that customers see their clothes being made by hand.

When Deema left LCF she went straight into making garments, initially for students. A request at a house party to make a shirt sparked her interest in her eventual chosen career. Deema found out that not only was she quite good at shirtmaking but also that she loved it. The two shirtmaking apprenticeships on Savile Row were already filled but that did not stop her. She joined Sean O'Flynn on Sackville Street and continued to learn her craft. Working alongside his team in their basement she would continuously be taking notes and putting them into practice as she went along. Deema's experience is that one can't learn these skills at university or via the internet. Stuart Lamprell from Hardy Amies gave Deema her first Savile Row commission. She later moved on to

sharing board space at Brian Russell, also on Sackville Street. As a trade, shirtmaking is even more niche than tailoring.

Just two weeks after leaving LCF Antonia began a job at Hardy Amies, the Queen's tailor. She had spent six months pacing up and down Savile Row every two weeks with her CV. It was a chance visit to a wedding exhibition at Hardy Amies that gave her that all important foot in the door. Antonia started working front of house and then shadowed head cutter Stuart Lamprell two days a week. This then led on to a full-time apprenticeship under the guidance of Mr Lamprell. A job offer from Huntsman's head cutter Pat Murphy led to Antonia's departure from the company that had won her heart.

With her current business, Montague Ede, Antonia has adopted the old account system that the old city tailors used. Customers put a chosen amount of money each month into an account and when they have enough they are invited to commission a suit. It might take two years, but as Antonia explained, it is more approachable. A bespoke suit becomes accessible but also something they will cherish for a lifetime. A suit can cost between £3-3,500. Antonia has a diverse client base aged from 75 down to the youngest at just 16 years of age. She enjoys being able to be fun and creative with the young guys and then more classic for her mature clients.

I asked them about their decision to move to Soho:

**Deema:** I am more comfortable on this side of the street. Soho is my favourite part of London, I am a Soho bird. I would go to gigs at the Astoria as a teenager. Later at university, nights out were at Revue Bar and Madame JoJo's.

**Antonia:** We are a two minute walk from Savile Row, we get the best of both worlds. There are so many really exciting things going on in Soho at the moment in terms of fashion and tailoring.

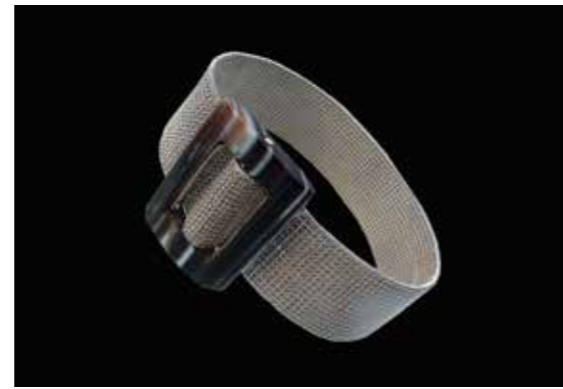
**D:** We had three days to get everything painted and machines in place. Friends from different tailors helped out, mopping, hanging pictures and rails. We have had an amazing amount of support, more than we expected.

**A:** Chris Kerr came to visit just a few days after we moved in, welcoming us to Soho. Savile Row is a broad term and the tailoring trade has a great sense of community and camaraderie.

**D:** I love what I'm doing now, continuing to hone my craft and skills while learning new ways to do it. It's great having the freedom to take on exciting and unique projects that keep my flair for creativity alive.

**A:** I am an idealist at heart. It's great being able to say that you love your job. It's been wonderful since we came here. I want to be able to do creative and fun work that I know I wouldn't get to do as a junior cutter. I'd like to continue making beautiful high quality garments and have happy customers. You are only as good as your last job.





### DOMINIQUE TOUCHETEAU Jewellery Designer

Dominique liked stones and shiny things from a young age. When she was a child she fell in love with some earrings that she thought were 40 francs but were in fact 400 francs. Not able to afford them, Dominique decided to make her own using champagne bottle tops, foil and glass beads. Later Dominique continued her love of making when she went on to study sculpture at Bordeaux Art School.

In June 1992 Dominique moved to London. Her first visit to Soho was in November of that year. A friend mentioned that tailor John Pearse was looking for an assistant. At her interview Dominique showed John a dress that she had made. After a couple of questions John asked 'Can you stay?', to which she replied 'Sure'. Later that day Errol

Brown from Hot Chocolate visited the shop to pick up a suit. Dominique thought working for John Pearse was going to be interesting.

Dominique's jewellery training was undertaken at evening classes at Morley college where she learnt skills such as soldering. As she has not undertaken a formal apprenticeship she has often had to find creative ways to resolve technical challenges such as stone setting. Her unconventional methods include the pictured ring where the hematite stone is beautifully held in place by a woven silver band.

For the past 10 years Dominique has divided her week equally between Devon and Soho. She makes her jewellery at her little desk in Devon. Twisted trees and the snaking streams of Devon have provided her with inspiration for her jewellery collections. Her current collection is inspired by ivy and the way it entwines itself around trees. Dominique reworks and reuses leftover silver wire to create intricate and elaborate designs.

Visits to Hatton Garden gold platers provide an excitement and a buzz. Dominique finds reasons to visit these skilled gold platers who instantly understand her requirements. Her work is very labour intensive with a single bracelet taking up to six weeks to make.

In 2011 Dominique received a commendation at the Goldsmiths Craft and Design Council Awards for a layered, intricately woven, gold plated bracelet. Her varied customer base includes a retired vet, a Disney executive, a Madagascan stone seller and several John Pearse customers.

Dominique's ultimate dream would be to design for Cartier, however, she knows her next step would be for a good jewellery gallery to take her work and give her a chance.



### MOLLY RAE WITHERS Designer / Coat maker

Molly is a Savile Row trained coat-maker who is now based in a workroom on Dufours Place with three other coat-makers and a shoe-maker.

She studied History of Art in Manchester. It was during that time that Molly became interested in the William Morris idea of knowing one's craft inside out along with the socialist ideal of living sustainably. When she returned to London she started working in costume and films. However her frustration with everything coming from the high street and with clothes being made to look old drove her to search for a new path, initially at tailoring college.

After many days spent pacing the streets with her CV Molly gained an apprenticeship as a coat maker at Kilgour, 5 Savile Row in

2010. Along with her fellow trainees she worked from a studio in Brewer Street. For Molly this was like coming full circle as she had attended the Soho Family Centre nursery as a small child just a bit further along on Brewer Street. By the time Molly began her apprenticeship the doors had begun to open for women on Savile Row. John Hill was her master tailor who, as Molly puts it, 'taught me everything he knew.' Molly went on to say, 'It feels really good to be back (in Soho)... there is a strong tailoring community here, although there are fewer tailoring work rooms than there used to be.'

From her Dufours Place workshop she works as a freelance coat maker working for several Savile Row houses including Kilgour, Henry Poole, Kathryn Sargent, Dunhill and Stowers. Sustainability is intrinsically built in to Savile Row garments. Molly explained, 'The idea is that suits we make are made to last for generations and let out or taken in

as needs be. The garments are much more considered as they are made from scratch so that they function well for the customer'.

Evenings and weekends are spent working on Molly's first capsule collection of classic 1950s tailoring with a Japanese aesthetic. Molly describes this as mix & match basics to make getting dressed in the morning easier. The idea is for one to have a smaller wardrobe with coordinating garments that can be worn during the daytime or evening.

Molly's ultimate dream is to have her own studio, preferably in Soho, a small creative space where she can collaborate with as many people as possible. Having grown up in Soho she feels it is the most exciting place and has a great sense of community that she would like to be part of even more.

Finally, when I asked Molly for her Soho recommendations she said, Mozzino's cafe on Broadwick Street and I Camisa & Son on Old Compton Street.



## GEORGINA CLARK

We Are Cuts / Jewellery designer

Many in Soho will know Georgina Clark as a hairdresser at the long established salon We Are Cuts on Dean Street. However, her work as an accomplished jeweller is beginning to gain growing recognition.

Georgina divides her week between Soho and Hertfordshire. She has been with We Are Cuts for nearly six years. Previously at a salon in Covent Garden We Are Cuts caught her eye when she walked past their previous shop in Richmond Mews. She wrote the name and number of the salon on a piece of paper and put it in her bedside drawer. Nearly two years later she gave them a call.

Not wanting to give up either of her passions she combines her love of hard and soft materials, metal and hair. She says, 'It works really well combining four days at We

are Cuts and three days as a jeweller. Both are really creative, but very different. When I'm doing hair I'm talking to clients and then I go home to my bench working alone with the radio.'

Georgina spoke to me about how she became obsessed with metal. 'I started doing an apprenticeship with an artisan blacksmith at a forge in Kew Bridge the year before I began working at We Are Cuts. Every Tuesday I would go there from 7am-7pm grinding, welding and working with the anvil. The blacksmith wanted me to go full-time but I wasn't ready to give up hairdressing. I was gutted when it finished.'

A chance discovery of a silversmith just off Redchurch Street led to a change in direction. She took short courses at London Jewellery Workshop learning cutting, soldering and basic jewellery techniques. Much of the work involved using similar principles to those she had learnt at the blacksmiths.

'The best thing about jewellery is that you can sell it. It is a popular art form for people to buy. Now that the jewellery is paying for itself I can begin to create more sculptural pieces. The opportunity to create is an amazing position to be in. I love the process and want to keep making and watch my jewellery business grow.'

The French House is Georgina's second home in Soho and many of the staff are her hairdressing clients. Last Christmas landlady Leslie Lewis offered the upstairs bar to local artisans and makers for two pop-up markets. This was the perfect opportunity for Georgina to introduce her jewellery to the Soho community.

For Georgina the ultimate dream is to have a shop that is all about her. A space that accommodates both an artisan/craft area with a hairdressing chair and basin where customers can watch George making jewellery while they get their hair done.



## DAVID MILLER

DM Buttons

DM Buttons have been sewing button holes in Soho for over 100 years. Curiously I discovered David Miller's business via Instagram. In contrast to this online introduction, when I walked down Wardour Mews off D'Arbly Street to visit David it felt more like stepping back in time. The business began on Berwick Street and moved to its current premises approximately 70 years ago.

David's Polish Jewish ancestors came to London over a hundred years ago giving the name of their occupation rather than surname. David's father started out working for his own father, making cloth caps that were sold down Petticoat Lane. One day he was asked to help out at a buttonhole factory owned by a relative, and he never went back. There were five or six buttonhole makers in

the West End when he started. He worked until the age of 90, and sadly passed away aged 93.

David was about 12 when he began working at the factory. He started with a bit of overlocking at the weekends. In his twenties David was asked by Liza Bruce's swimwear company to make 1000 covered buttons. He did the job to get some beer money. That became David's part of the family business. His clients included Bruce Oldfield, Caroline Charles and Ben de Lisi who was on Silver Place at the time.

A couple of years ago customers started asking for embroidery. David employed Kate to provide monogramming, answer the phone and generally help out. They stitch designs and logos onto garments and the covered buttons.

When I visited David he was working on garments from Charles Jeffries and Topshop samples for their fashion show. His busiest time is just before Fashion Week.

His father relied on one or two customers but David has many customers including Victoria Beckham, Stuart Parvins, Suzanne Neville, Vivienne Westwood and, before his untimely death, Alexander McQueen.

When David arrives in Soho at 6.30am he says 'It's horrible, it's cold and you've got crackheads down here. There are a huge amount of homeless people around. Some bloke is living down the mews in cardboard boxes.'

When I asked David about the future of DM Buttons he commented that rents are so expensive in Soho now. At the end of his last lease he was getting panicky and scared. His fears were abated when his landlord emailed to say although they couldn't offer him a 25 year lease they were able to offer a 5 year lease at the current rent.

David doesn't take a lunch break, if he can get five minutes he goes to Bar Italia to have a coffee with Tony Polledri or My Place cafe on Berwick Street to see proprietor Dini.

# SOHO NOTICES

A General Round-up

## SOHO HOUSING

When I first arrived at Soho Housing some six months ago I was amazed at the extent of the good nature of our residents and how much of a “buzz” there was around the community feel of the place. This was evident within the first week when I was greeted with a “good morning” as I passed a resident in the street, whose home I had attended for a leak the day before. Having worked in the housing sector for near on ten years I had never experienced such a level of friendliness and community before. Our residents of Soho and Covent Garden create a real village atmosphere within these areas and part of being Asset Manager for Soho Housing is to develop this feeling and make sure it not only affects our residents but also plays a part in the wider neighbourhood.

Obviously this is a challenge but it's usually the small things that mean so much – for example: making sure our blocks and communal areas are bright and clean in order to give everyone a nice feel in the morning when they open the door to go about their daily business.

We want our residents to feel proud of their homes and enjoy welcoming friends and family, and play an active part in keeping their surroundings in good condition (e.g. ensuring communal areas are well maintained and rubbish is not dumped).

We have already made huge strides over the past six months in providing better communication with our residents, however the work has only just begun! The real hard work commences now and we need to provide good communication which has to be relevant and live, so a key focus

of ours is to keep our residents regularly updated on matters surrounding our residents' homes, blocks, estates or the local neighbourhood. We aim to offer a wide range of communication sources, including our main website, “MySoho” – our resident web portal service, social media and email, as well as more traditional methods like telephone and noticeboards. This is something we will be paying particular interest in over the coming year as I believe communication is key to successful landlord/resident partnership.

As we move into this year we are in the process of producing a Customer Journey booklet for planned works and our residents will receive one of these booklets prior to any planned works being carried out. This will inform the resident exactly what to expect from the works within their home.

The satisfaction for me is not just carrying out a good job; it's making sure the resident has a great experience from the moment they report a job right through to aftercare during the post-works stage.

Gary Bage  
Asset Manager

## PROGRESS ON THE STREETS OF SOHO?

The jury is still out on the police response to public concern about drug-related antisocial behaviour (ASB) in Soho.

It's probably fair to say that most people noticed an increased police presence on the streets in the weeks following the public meeting at the end of September last year. This was partly helped by the reg-

ular seasonal operation which brings extra police into the West End, particularly on weekends. There was also a more focused approach at several of the locations which had been highlighted as particularly unpleasant for residents and businesses.

Councillor Nickie Aiken (now Leader of Westminster Council) responded to an invitation to walk round the area and heard about some of the issues from members of the Soho Ward Panel. The highlight, illustrating the problems we face, was when Cllr Aiken spotted a deal taking place over my shoulder in Tisbury Court. Unfortunately there were no police in the vicinity to whom this could be reported.

Since then, there have certainly been some welcome successes. The police Safer Neighbourhood Team has been focused on tackling problem individuals. One particularly persistent dealer was given a Criminal Behaviour Order in December, banning him from the area for 5 years.

There have also been several environmental improvements, through cooperation between the police, Westminster Council and other bodies. BT have removed doors from two phone boxes (Dean St, Brewer St) to reduce their use for drug taking and other ASB. Soho Estates secured an area in Bouchier Street that had been a focus for ASB, and this was appreciated by local residents. Lighting issues have also been resolved in several locations.

Another advance came with the announcement by Cllr Aiken that the government had agreed to classify Spice as a Class B drug. It is thought that use of Spice has increased chaotic street behaviour by users. This measure will aid the authorities in supporting

these vulnerable users and thus benefit the wider community.

However, despite all this, the Ward Panel is keen to find out from the community whether the general perception is that drug-related ASB has reduced. Visible policing seems to have declined again, and with the Mayor having to campaign to avoid cuts in resources it seems that the increased police numbers demanded by the public meeting are unlikely to materialise. In addition, the cold weather may have had an impact in lessening on-street ASB, in which case we can expect it to rise again as the months get warmer.

Further steps are likely to be needed to bring about the long term improvements that Soho residents and businesses expect.

## BEST ONLINE RADIO AWARD WINNER: SOHO RADIO!

Congratulations to Soho Radio on being the overall winner of the Best Online Radio Station 2016 in the Online Radio Awards awarded by mix cloud.com in December 2016. They beat internet radio stations from the Middle East, Africa and America after they were awarded best online station in Europe. As they say, ‘Soho Radio is furiously independent, championing brand new talent and Soho legends daily. New and innovative radio is our speciality.’

Live live via [www.sohoradiolondon.com/player](http://www.sohoradiolondon.com/player) on your smart phone, tablet or computer. Alternatively podcasts of all their shows can be found on [mixcloud.com/sohoradio](http://mixcloud.com/sohoradio).

## HOUSE OF ST. BARNABUS STORY TELLING AWARD!

At the end of January at the SE100 Social Business Awards, Soho's own The House of St Barnabas took home the Storytelling award. The charity run a social business, their not-for-profit members' club, to support people who have been affected by homelessness back into last-ing work, creating a space for participants of their employment programme to gain real work experience, and generating the income needed to support their Employment Academy.

The award recognises the impact of the stories that they tell about their work, their unique model and approach to tackling homelessness, and above all, the stories that describe how The House of St Barnabas supports participants and graduates of their Employment Academy.

Graduates Denise and John went with members of the team to receive the award at Natwest's HQ in the city. Denise, who regularly blogs for their website, graduated from the programme in December to a job as commis chef in the kitchen of the members' club. John Smallshaw is a poet of incredible talent and in addition to being a graduate and employee of The House of St Barnabas, runs a regular poetry evening in their chapel, bringing together an eclectic group of young rising stars and seasoned storytellers.

The House of St Barnabas said; “We are proud to be members of the SE100 Index and were thrilled to be part of an evening celebrating the thriving world



The House of St. Barnabas team picking up their well deserved award.

of social business. Thank you to Matter&Co and Natwest for recognising the power of our stories to have real positive impact for those we support.”

## PIZZAZZ AND PLODDING ON

Neighbourhood Planning isn't glamorous, as anyone involved will tell you. But while the Soho Neighbourhood Forum continued its work through the winter, a little bit of pizzazz was provided by the visit of Amy Lane, London's Night Czar (or Tsar, depending on which newspaper you read).

Amy came to meet the Forum's Culture, Heritage and Commerce Policy Develop-

ment Team in January, where she discussed a range of issues relating to the night time economy. The invaluable West End Extra reported that this included ‘how to work together to keep Soho a vibrant place, and to stop it “becoming bland”, as well as ensuring the best deal for the area's residents.’

The other Policy Development Teams (Environment and Housing) have not had anything quite so exciting to deal with. Research requires time and effort and has to be accompanied by intensive debate, but this is gradually bearing fruit.

At the time of writing the Forum Steering Group are about to consider the first draft of policies for our Neighbourhood Plan. The next stage in the process will be a consultation in the spring with as many interest groups within Soho as possible to get feedback on this draft. Among

the likely proposals are measures to spend affordable housing funds within Soho, to improve air quality and to support the creative industries.

## PIZZA PILGRIMS 5TH BIRTHDAY

Congratulations to Thom and James Elliot on 5th Birthday of Pizza Pilgrims. The two brothers started their business in March 2012 selling pizzas out of a specially converted Piaggio Ape van named “Conchetta” on a pitch on Berwick Street Market. They now run four pizzerias two in Soho plus others Covent Garden, Exmouth market and a crazy golf and pizza venue in the City of London.

# WE'RE WATCHING

*Planning & Licensing*

## PLANNING

'The King is dead! Long live the ... What? There are two new kings?'

Observers across Westminster were thrown into confusion by news of the council's cabinet reshuffle at the turn of the year. For years, Cllr Robert Davis had reigned supreme in planning matters. If his move to become Cabinet Member for Business, Culture and Heritage was a surprise (it was one of a number of changes announced by the new Council Leader, Nickie Aiken) so too was the appearance of a new role in the list of appointments, that of Chairman of Planning.

The Society's Planning Group had an early opportunity to find out more about what effect this will have in practice when Westminster's Director of Planning, John Walker, attended our January meeting. In what has become a roughly annual event much appreciated by the group, John answered a range of questions, with accompanying frank and very helpful discussion.

It turns out that it will take time for the full implications of this change to materialise. Apparently Cllr Astaire, as Cabinet Member for Planning and Public Realm, will lead on planning policy and deal with developers prior to applications being made. Meanwhile Cllr Richard Beddoe will take the lead on dealing with planning applications once they have been submitted. This may be seen as a move to counter perceptions that developers were too close to decision makers.

What might this mean for Soho? It's far too soon to say. No one could doubt Cllr Davis's commitment to an extremely demanding role (as an aside, residents generally underestimate the hard work many councillors at all levels put in on our behalf). Under his leadership, Westminster planning policy developed in a way that has a great deal to commend it. However, in recent years, with increased pressure for 'growth' following the recession, observers in the West End have become increasingly concerned about the way that policy has often been trumped by 'the overall benefits of the scheme'. Many would say this has been detrimental to residential amenity and also, in Soho especially, the character of the area.

Whether, and how, this will change under the new regime remains to be seen. As an officer of the council, John Walker was of course unable to comment on the political aspects of the changes. He did remind us, however, of the important place that community views have when planning decisions are made. John also made the point that to have any effect we must make sure that these views relate to specific issues covered by planning legislation, otherwise the council cannot take them into account.

In other news, the Planning Group had a presentation about a proposed hotel development in Broadwick Street. I cannot recall the Planning Group being unhappier on such an occasion, with the presenters seemingly oblivious to how their 'nice idea' of a boutique hotel for upmarket creative executives might be received amidst the struggles

of Soho today, where the community identifies very different needs. When the application was submitted we made relevant objections.

Further along Broadwick Street, Great Portland Estates redevelopment is coming to an end. Number 30 is slowly coming into use. Next door, The Ivy Soho Brasserie should be open by the time you read this. Views will vary as to whether this is change that Soho needs or whether it instead is part of the transformation of Soho into a mini-Mayfair. (How long is it since the Clarion had a Letters page?!)

Anyway, the completion of work on that development has seen the centre of gravity in Soho development shift further eastwards with Soho Estates starting work on Ilona Rose House at the old Foyles site. For residents and businesses in that area, the relative breathing space enjoyed since the retreat of Crossrail from Soho Square is over.

But to end on a positive piece of development news, at least Soho Housing's project at 59 Greek Street will produce 9 on-site flats at discounted rent!

## LICENSING

A quick look over our records confirms that, since the last Clarion, the Licensing Group have sent in fifteen representations to licence applications within the Soho boundary. 'Representations' are letters of objection to any aspect of the licence application, and are usually a way of

opening negotiations to ensure that the proposed application is mindful of the immediate surroundings as well as its potential impact on the wider neighbourhood. Roughly 80% of these applications were asking to change the conditions of their current, operational licences, i.e. change the conditions under which they sell alcohol, extend their opening hours, and, in one case, be allowed to present fully nude performers until early morning. None of the requests, taken alone, appear to be problematic. But when any-one requests changing licensed conditions, we always have to be mindful of why the conditions were imposed in the first place. Granted that, since obtaining the licence, things might have changed and the applicant has perhaps realised better ways of operation or has identified ways to increase profits. Quite a few applications are for very late terminal hours – until 2, 3, 5 and even 6am. This is despite Westminster making Soho part of the West End Cumulative Impact Area due to the intense saturation of licensed premises in the neighbourhood. This means it is theoretically quite difficult to obtain a licence to operate beyond 11.30/midnight in order to protect residential amenity. But the late applications keep on coming. No doubt traders are gearing up for an expected bonanza to be delivered by late-night tubes and (The Mighty) Crossrail...

David Gleeson  
Licensing Chair

# BIRTHS, MARRIAGES, DEATHS

*Arrivals & Departures*

## DEATHS

**Tom Edwards**

21st February 1975 –  
25th January 2017

by Ewan Bruce

Tom was 100% about everything he did. Skate! Play! Perform! Smack that axe! He was Prince of the Kats! It's no mistake every line has an exclamation mark! He was my best friend.

I met Tom in the blazing hot summer of 1977. We were children of the sun with our striped shirts and dungarees! We linked arms, held hands and became best buddies forever! Brudders! We took to the stage and performed, side by side. He always had my back. As Aunt Sponge and Aunt Spiker, in James and The Giant Peach, Tom was the cuddlier Sponge. He was George, in George's Marvelous Medicine, and I was the uglier Grandma. We made gangster films and westerns on my dad's VCR. We were the Dangerous Brothers! And we won talent shows!

Then, Tom picked up the guitar! At the age of 12 he played Johnny B. Good to the wonder and amazement of all his peers and band members. He was in a class of his own. If I was the class clown, Tom was already the class guitar hero! Rock and Roll was in his blood, and a monstrous sound, louder than war, happened right there like an immaculate conception! It never went to his head. If he ever joined your band, he was in it forever, committed and loyal, as members of Spiderbites, Dirty Dog Band, Adam Ant, Fields of the



Tom Edwards performing, originally featured in Guitar Player Magazine. Photo Bryan Turner.

Nephilim, Deep Slop and Wild Like Sioux can testify.

Tom loved to skate, he was reaching out across the water to skate in California; he had some good friends there. He was proud and he had the tattoos. He had the Suffolk badge 'Guide Our Endeavor' emblazoned on his guitar with 'Viva Bildeston' and tributes to loved ones. Tom loved you!

Tom was the King of friends and the strongest of men! He called me Bruce Almighty! We had our radio show, Rock Hard In The Morning, which was remedy for both of us, a chance to catch up and be besties again. We were in pre-production for a TV series and a Christmas hit sin-

gle, Dinner With God, and Thank God It's Christmas! He told us to keep an eye open in the future! I guess he's up there now, with Brian Knock and Stuart Mitchell and Bib Edwards!

The last time I took to the stage with Tom was in July 2016 at his beautiful girlfriend Charis's legendary garden birthday party! We did A Real Mother For Ya and Mississippi Queen! And for a brief, wonderful moment it was like the old days. Tom broke a string!

Now listen to Chinese Burn by Spiderbites and look at the Instagram of Tom's fingers after playing it! He played his heart out!

Tom is 100% legend, rest in peace brother

## BIRTHS

**Scarlett Eleanor Whomes**

Born to Daniel Whomes, Soho Society board member on 10th November 2016.

**Emily Autumn Giblin**

Born to Sacha Giblin, Soho resident, on 7th November 2016 at UCLH.

**Vesper Serena Barrett**

born to Lucy Head and David Barrett of Berwick Street on 28 November 2016, sister to Honey Barrett of Soho Parish Primary School.





# L'ESCARGOT

London's first restaurant to serve snails.

MoSoho. Bringing Life to History.

When Monsieur Georges Gaudin established his restaurant Le Bienvenue in 1896 in Greek Street, Soho had been London's Latin Quarter for over two centuries. The Huguenots arrived in the 17th century and the French refugees brought not only their superb craftsmanship but also culinary delights including a recipe for an ox tail soup that became a great favourite in local homes.

At the end of the Victorian era Soho had French pharmacies, barber shops, printers, publishers, French bakeries, patisseries and French groceries. What it didn't have however was a French restaurant with snails on the menu.

The breeding of snails can be traced back to the Romans in Britain, who fattened them on wine and bran. In the Middle Ages snails were popular dishes on meat-free Fridays as it was considered a 'wall fish'. However,

it was Le Bienvenue that first served les escargots. The enterprise was so successful that Gaudin had to find bigger premises.

In 1927 Gaudin moved the restaurant to its present location at 48 Greek Street and by popular demand renamed it L'Escargot Bienvenue in honour of his most popular dish. The snails were now also locally sourced as they were bred in the restaurant's basement. A plaster bust of Gaudin riding a snail with the motto 'slow but sure' is still on display outside.

Back in the 1920s the spirits were high, the atmosphere decadent and everyone loved good food and wine. L'Escargot offered an exciting venue where the famous and infamous could mingle with general diners. One early habitué was the French fashion designer, Coco Chanel and legend has it that the young singer and actor, Maurice Chevalier adopted his famous 'boater' straw hat after spotting a

gentleman wearing a similar hat in L'Escargot. The whole place is steeped in history and the list of past and present customers reads like a Who's Who of fame and notoriety.

In the 1980s L'Escargot employed the legendary, maître d' Elena Salvoni. She welcomed all her customers with a great warmth, professionalism and a sixth sense of just where best to sit them. The list of guests back then included Mick Jagger, Judy Dench, Sir David Lean, Sir John Gielgud and Princess Diana. Elena was charming but firm and discreet and would never allow her famous guests to be disturbed for an autograph. Elena known also as the Queen of Soho passed away last year at the age of 95.

Since 1927 L'Escargot has changed hands and chefs a number of times but has remained a Soho institution and one of the best French restaurants in London.



When Laurence Isaacson CBE (co-founder of Groupe Chez Gerrard) and Brian Clivaz (founding Director of Home House, private members' club) acquired L'Escargot in 2014 from Marco Pierre White they refurbished the place with great enthusiasm and care. The mansion dates back to 1741 and covers an area of 5,500 sq. ft. with many rooms on several floors to explore. Bold reds, blues, greens and purples prevail and the liberal use of gold leaf brings out the delicate cornice work in the ceilings.

Art and artists have always been an important part of L'Escargot. As you walk up the magnificent staircase the place looks a bit like an art gallery set in a stunning 18th century house. The current art collection includes works by Peter Blake, Salvador Dali, Damien Hirst, Keith Haring, Lincoln Townley, Andrew Logan and fashion illustrator, John Booth.

Managing Director; George Pell who joined L'Escargot in 2014 is passionate about art and this is reflected in their entertainment programme supporting emerging talent and hosting shows with the Slade School of art. Located on the top floor the famous salon noir looks both comfortable and elegant with a large bar and an impressive skylight. L'Escargot is more than a renowned restaurant; it is also a members club offering a variety of events including poetry recitals, live music, live drawing, cabaret and burlesque. It feels bohemian and very much Soho and the perfect venue to throw a party.

Since its opening 90 years ago L'Escargot still remains a place to enjoy excellent French food, wine and soak up the ambience in its elegant but homely surroundings. The snails though no longer bred in the basement are

still very much on the menu. Chef James Tyrell has successfully mastered a new style of French brasserie cooking with a modern twist. His favourite chef is Pierre Koffmann who having dined here described the crème brûlée as the best he had tried.

Soho is a cosmopolitan village and L'Escargot is an important part of it. It supports local community events such as the annual Soho Fete and Waiters Race and the chocolate snails donated as prizes for the Snail Race winners are delicious. I was lucky to win one last year!

Bon anniversaire L'Escargot!

Nika Garrett is a London tour guide who creates and guides bespoke walks for business and visitors to London. [www.mylondonwalks.co.uk](http://www.mylondonwalks.co.uk)

# SOHO REVIEW

*Art / Books / Music / Theatre*

## MUSIC

**Hilary Penn**  
*Soho Clarion Music Critic*

**Tiger Lillies**  
*Cold night in Soho*

The first time I saw the Tiger Lillies was over 20 years ago in The Conway Hall in Red Lion Square, Holborn. Oli Max had put together a compilation CD called "the Misfits" which was mostly artists who couldn't get a recording deal. Others in the show included The Mindless Drug Hoover, Phil Dirtbox (one of the unofficial mayors of Soho according to local radio presenter Chris Sullivan), and other artistes who are still struggling to get a recording deal.

The Tiger Lillies did "Heroin and Cocaine", and had the crowd cheering and stamping and shouting for more. Years later they sang the same rousing ditty online for the funeral of Michael Wojas, proprietor of The Colony Club, where they had played many an impromptu gig. The band can sometimes be spotted sans macquillage in

The French House and Gerrys. They have done several shows at the Soho theatre and the ringmaster/singer/songwriter Martyn Jacques lived above a brothel in Rupert Street for years so they are no Johnny come latelies, as it were.

I recently saw them again on a cold night in Paris, accompanying a Nan Goldin slideshow which frankly made me want to top myself! Luckily they performed the new album also and it warmed my heart to hear a jaunty new song called "Heroin", alongside other ballads of dependency on just about everything. Should you get the chance to see them live grab it with both hands and don't let go until it stops breathing!

How to best describe their sound? Get a massive food mixer and chuck in Tiny Tim, Aleister Crowley, The Captain Matchbox Whoopee Band, Edith Piaf, The Rubbishmen of Soho, Nick Cave and Dame Edna Everage. And William Burroughs. And one dead Bee Gee. Whack it on top grind and you might get something that comes out like the Tiger Lillies. They are certainly not everyone's cup of Mothers Ruin, in fact many folks may wish to switch off the stereo and call the authorities. But seriously, have a listen to this album and make up your own mind because the lyrics and the musicianship are extraordinary.

The album opens with "Salvation Army"... They come to Soho, and you know they will give up hope and retreat long before the track wheezes it's last breath. All is lost and there seems no hope, but wait!!! It's not all doom and gloom! Listen to "Finsbury Park" and get a sweet goodnight kiss! (If you don't mind where that mouth has been).

The Tiger Lillies possess an acrobatic ability to flip from wrist slashing dirges about downtrodden hookers and their pimps, ("A Cold Night in Soho") to catchy, frothy circus-like ditties about....well... Class A drugs ("Heroin"). "Let's drink" reminds me of several Soho Professional Alcoholics I have seen come and go over the years. The lyrical observations walk a tightrope with heartbreak on one side and hilarity on the other, but to paraphrase Sebastian Horsley, if you can't laugh at death, what can you laugh at?

Fans of the band include Devo, Marc Almond and Barry Humphries. If you haven't heard the Tiger Lillies do yourself a favour and take a flying leap out of your comfort zone and get the album, which is available, appropriately, from Misery Guts music. It will be a great Soho time capsule for your grandchildren, or a petit mort memento mori for Soho herself.



Nick Veasey, *Marilyn*.Juan Fontanive, *Ornithology*.Ryan Hewett, *Titanium White Collar*.

## ART

Clive Jennings  
*Soho Clarion Art Critic*

Lots to see in Soho's burgeoning art scene, this Spring, and for those bold enough to head north to Fitzrovia or West to Mayfair across the great divides of Oxford Street and Regent Street, an even greater choice, with over 50 galleries in Fitzrovia now, mainly around Eastcastle Street, and many new galleries opening up in the streets of our posh neighbour Mayfair.

Riflemaker Gallery is housed in one of Soho's oldest buildings, dating from 1712, and much of its charm derives from a policy of "benevolent neglect" whereby the walls are not redecorated and their pitted, pencil marked patinas reflect the history of every exhibition held there. This is the perfect backdrop for Brooklyn artist Juan Fontanive's exhibition "See- Sounds" (21 February to 24 March) Fontanive initially made his name with his Mutoscopes, small mechanical sculptures that work same principle as the flipbook or "What The Butler Saw" machines in Edwardian amusement

arcades. Exquisitely fashioned cogs and brass components power these "paper films" as the pages fall jerkily in neat layers in the manner of a paper fountain, somewhere between film and sculpture. "See-Sounds" consists of a series of kinetic sculptures that move in sequence, and are choreographed as individual elements, working together like components in a song.

Lights of Soho, on Brewer Street, has successfully pioneered two new concepts in the presentation of art. It is the world's first light-art gallery, and morphs into a private members club after dark. Appropriately for Soho, it is housed in an old sex shop, complete with basement "caves". (If you have occasion to use the unisex loos, downstairs, I can recommend the one at the very far end that has an enigmatic "staircase to nowhere".) Exhibitions here are always a riot of colour and creativity as artists explore the possibilities of neon as art medium. Like the "neon graveyard" in Las Vegas, the whole ethos of the gallery is an homage to Soho's neon history. A recent exhibitor Anna Laurini, whose signature "Profiles" with their large seductive eyes and plump red lips have been popping up all over the West End over the last year, from graffiti on any available wall to the windows of Heals. For Lights of Soho, her iconic, stylised faces went electric with pulsating neon lips.

Unit London is a relatively new gallery on Wardour Street. It is an impressively large and elegant exhibition space whose mission statement is to: "break down the barriers of elitism and include people in the contemporary art world". To achieve this, they are open seven days a week to the early evening, an excellent idea in area renowned for keeping eccentric hours. Artist led and making the very most of social media as a method of propagating images, their roster of artists could be loosely defined as figuration with a twist, and often a dash of drama. I particularly liked Nick Vesey's life size holographic x-ray lenticulars of celebrity icons, such as Marilyn Monroe and Muhammad Ali; and South African artist Ryan Hewett whose eerily compelling portraits fall somewhere between Soho's own Francis Bacon and American artist, George Condo.

If you are feeling a little footsore and "arted out", I can highly recommend Andrew Edmund's Print Shop and adjacent restaurant. If 18th and 19th century English and French prints are your thing, and you know what you want, this is the emporium for you – just to stare through the window at the wonders within is to experience the art world of mahogany plan chests and museum quality works, that existed long before the white walled galleries of today. Then you can pop next door for a "stiffener" and a meal.

## BOOKS

Daniel Whomes and David Gleeson  
*Soho Clarion Literary Critics*

### *Ham Yard: The Last Stand*

Jeremy Reed and Gregory Hesse  
[www.jeremyreed.co.uk/hamyard.html](http://www.jeremyreed.co.uk/hamyard.html)  
Reviewed by David Gleeson

Ham Yard used to be my short cut home. Turning off Great Windmill Street, or going straight ahead from Archer Street, it was a crumbling, ugly piece of Soho that had never quite recovered from wartime bombing. It was also the portal to the grim car park from which I would emerge onto Denman Street and be home.

During years of hurrying past drinkers outside The Lyric pub, men pissing, junkies quietly injecting and a rap star I'd never heard of having his album cover shoot, I was unaware of how rich the musical history of this quaint little corner was. A basement room in the early 1960s was The Scene Club, the epicentre of Mod cool, whose cachet was forever sealed when the Rolling Stones played one of their early gigs there in summer 1963. The Who, Pretty Things and many more followed. But The Scene was merely one in a long line of Ham Yard clubs which stretched back to the 1920's when the Ham-bone included Tallulah Bankhead amongst its members.

A few months before it was turned into the chi-chi-urban-village-hotel-courtyard-with-real-trees, Ham Yard was witness to a performance collaboration between Jeremy Reed and photographer Gregory Hesse where Reed was recorded performing poetry in homage to the cultural history of this soon-to-be-transformed corner. The result is this slim but impressively produced volume, which references Ham Yard and our wider neighbourhood with twenty poems and b/w photographs of Reed performing them in the Ham Yard of my memory.

A prolific poet, novelist, critic and translator, Reed has an impressive list of fans that include J G Ballard, Lawrence Ferlinghetti, Edmund White, Bjork and Pete Doherty, amongst others. Here, like many of us, he laments the passing of a more creative, fertile Soho in punchy, plangent words – see Torch Singer and Leicester Square Public Toilets. Available from the Society Club.

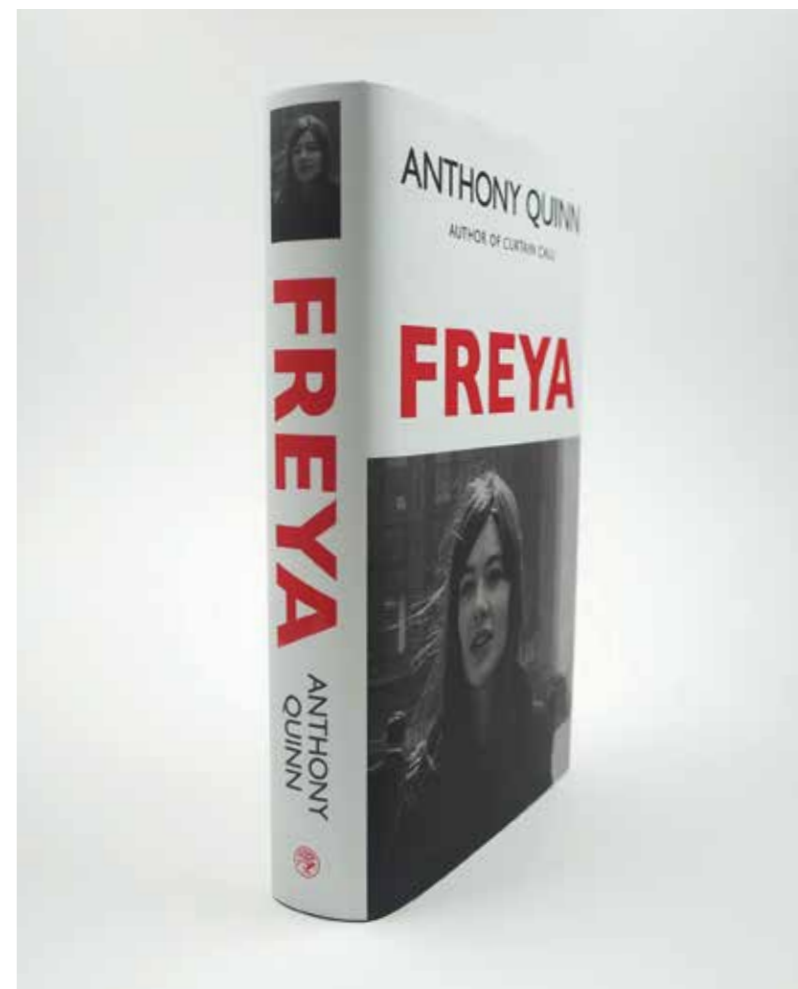
### *Freya*

Anthony Quinn • Jonathan Cape (2016)  
ISBN 9781910702505  
Reviewed by Daniel Whomes

Author, Anthony Quinn reintroduces us to several characters from his brilliant book 'Curtain Call', in his latest novel Freya. The most important being the protagonist, Freya Wyley, who has now grown from a rebellious twelve-year-old girl, to an even more rebellious twenty-year-old young woman.

The story starts explosively on VE Day in London. It is here forthright and strong Freya meets Nancy, a quiet and gentle woman, who will share her journey. It is their relationship that endures and lasts through the following tumultuous twenty years. Interspersed throughout the story are several other strong characters, including fellow student Robert Cosway and the dandy playwright, Nat Fane. The reader is taken through two decades of London via Oxford and Nuremberg, with regular forays into 50s and 60s Soho. Anthony Quinn shows us snapshots of the West End from exciting and dangerous glimpses of Soho's seedy underbelly to its fashions, moods and people.

The standout strength of the novel is Anthony Quinn's brilliant characterisation.



Freya, Anthony Quinn.

What really grabs the reader (and shakes you around) is his incredibly powerful depiction of Freya. He made such an impression on me that even after finishing the novel I caught myself thinking about Freya. Her character reflects on the huge changes of the times. She is the antithesis of the saccharine heroine. The reader follows her as she aggressively pursues a career in journalism. Despite Fleet Street being a bastion of misogyny nothing stops her progressing along her chosen path. This is what is so appealing about her. In a post-war world where initially women were expected to return to domesticity, Freya is ambitious, confident, driven, single minded and reckless. She is also selfish, rude, loud, aggressive, contradictory and thinks little of neglecting friendships if she deems them not worth her continuing. The author here, has written a real character, a flawed central player. She is absolutely perfect for the changing times that the novel passes through from the post war years to the 1960s.

Freya is a grand and nuanced book that is a real social commentary of the times. It has fascinating and passionate characterisation that analyses the powerful emotions that rule us all and the mechanisms we use to deal with them.

## THEATRE

Nina Davis  
Soho Clarion Theatre Critic

Over the past few years in London there has been a distinct uprising of a most surprising kind, (amongst all the jukebox musicals, tourist favourites and celebrity-driven vanity projects that seem to dominate the West End most of the time). No, it's not another Chichester transfer or a Broadway super hit (both of which are fantastic contributions to our theatre scene, by the way). No, what is making a return is...old time farce! A revamped and perhaps classier Ray Cooney-esque style of comedy that is becoming really big news. The two big hitters of this renaissance are Mischief Theatre, creators of *The Play That Goes Wrong*, and *Showstopper* - the *Improvised Musical*.

Let's start with *Showstopper*, currently performing every Monday until June at the Lyric Theatre on Shaftesbury Avenue. This show has been going since 2008 with pretty much the same company, led by Adam Meggido and Dylan Emery. Having seen it a number of times over the years, I can confidently say that it is simply brilliant. This is not improv of a 'Whose Line Is It Anyway?' variety, fantastic as that is, no, these performers create a brand new show every single night from scratch. The audience are asked for suggestions and the performers have to go along with it, because, as we all know, there's only one rule with improv, say yes! 'Accept and build' as it's drilled into drama students. These guys are seriously, through-the-roof talented and absolutely deserve the accolades they are getting. It's a refreshing change to see this kind of theatre thriving against all commercial odds. The company have worked together for so long that they can almost predict each other's next move. It takes a sharp clever wit to be able to pull this kind of thing off night after night and these actors have it in droves.

Mischief, however, seem to be on a different journey entirely. Originally formed of a group of out-of-work actors graduating from LAMDA (under Adam Meggido's tutorage no less) they formed a company and started with improv led shows in Edin-

burgh which turned into their biggest hit so far, *The Play That Goes Wrong*. This show, a long runner in the West End, won an Olivier award, no small feat for a company starting out. They now have two other shows wowing audiences, *Peter Pan Goes Wrong* at the Apollo Theatre and *The Comedy About A Bank Robbery* at the Criterion, in the same vein. It was announced recently that *The Play That Goes Wrong* is going to Broadway produced by none other than JJ Abrams, producer of the *Star Trek* and *Star Wars* films. How amazing is that? I find the success of these two companies gratifying and heartening to say the least. In an industry which is becoming so, yes that word again, commercial, and celebrity driven, and in a world which seems to be losing all of its values, the fact that true, undisputed talent is winning through is a big win. Long may it continue.



Cocktail of the Month

## THE DUPPY CONQUEROR

### Ingredients

The duppy share 50ml  
sugar syrup (1:1) 30ml  
freshly squeezed lime juice 25ml  
3 dashes of angostura bitters  
a lime wedge and nutmeg

### Method

Blend ingredients and pour over crushed ice. Top with 3 dashes of angostura bitters. Garnish with a wedge of lime and a grate of nutmeg.

## FOOD & DRINK

### Gerry's Wine and Spirits

Best Independent Rum Retailer

Congratulations to Gerry's Wines & Spirits on Old Compton Street who picked up an award for the Best Independent Rum Retailer at Think Rum! 2017. Allen Daly, manager of Gerry's commented, "I think that it gives us inspiration to continue our love of all thing rum."

### Drinks Retailing Awards 2017

Lifetime Achievement awarded to Michael Kyprianou from Gerry's Wine & Spirits.

# THE BATTLE FOR SOHO HEALTH CENTRE GP PRACTICE

Readers will remember the long battle that we – patients of Doctors Cheung and Brassey at the Soho Square Health Centre – have had to retain the surgery.

One of the most rewarding aspects of the battle has been the support not only of the patients, but also of the many others in the Soho community and our neighbouring communities, our MP and our Councillors. We won the battle to save the practice and now, following some ups and downs with temporary providers (we had a very good period when Haverstock Healthcare, a consortium of Camden GPs were the temporary providers) since August 2016 we have a permanent provider who has a contract with the NHS to manage the practice for five years, with the likelihood that it would be extended – all being well – for another five years. After that, under NHS rules, the practice must be re-tendered. The contract for our surgery is called an APMS (Alternative Provider Medical Services) contract, whereby "providers", who can be commercial enterprises, non-profit making companies, community interest companies etc., tender to the NHS for a very detailed and quite prescriptive contract to manage a practice. More traditionally, practices are run under a GMS (General Medical Services) contract, which is between the NHS and the GPs. In future more and more practices will be run under APMS contracts.

Our new provider is Living Care Medical Services Ltd. and we are feeling very positive about the future. Our bottom line all along has been to that our highly respected GPs and the staff team will be enabled to continue to provide the high level of care that patients have since the practice first opened.

Living Care, under the leadership of the Director and owner of the company, Dr. Stephen Feldman, run a number of diagnostic and minor surgery health centres in Leeds and have several other surgeries in and around London. The PPG (Patients Participation Group) which took over from the Patients Action Group, meets bi-monthly at 6.15pm on the third Wednesday of January, March, etc.. The meetings are attended by Dr. Feldman and/or a senior representative of the company. A small group of six comprising the chair, vice-chairs and three other patients, also meet with Living Care representatives every month. All patients are members of the PPG (more usually a PPG consists of a tiny number of patients) and as well as attending meetings can communicate with the PPG through its dedicated email, sohosquareppg@outlook.com.

There will be changes, including to length of consultations, but these are happening

nationwide, and have been discussed with the patient group, and of course we will be monitoring how they work out both for the patients and for the staff team. There are new initiatives such as short telephone consultations for a minor query, which can avoid a trip to the surgery in person, and some of us are finding email communication helpful and timesaving. These have been practiced for some time but are being formalised. These of course only work when there is no need to see a doctor face to face but the aim is to make more time available, and shorter waiting times, when you do need to see a doctor. There continues to be a high level of satisfaction with the practice and this is demonstrated by the number of new patients that the practice is attracting. As the patient numbers rise we look forward to having additional clinical and support staff, such as a woman doctor and senior nursing practitioners, and we will be looking to work with the CLHCIC (Central London Healthcare Community Interest Company), which is the local federation of GP practices, and to an increase in the number of additional services which supplement the day to day support provided by the surgery.

## ASK AUGUSTA

**Augusta Wolff**  
The Clarion's very own therapist



I sometimes suggest to my psychotherapy clients that they imagine how they want their lives to be in six months' time, or a year from now, or ten years. I would follow up that question with an enquiry about what the person needs to do in order to make those dreams a reality. My first question is intended to help a client feel hope for a different future even when current cir-

cumstances are very difficult. The second question implies that the changes will not happen just because the client wishes for them very much. I cannot perform magic on behalf of my clients, but something almost magical can emerge in psychotherapy over time as old wounds are healed and new possibilities develop.

This issue of the Soho Clarion looks at the stories of young women who are pursuing their creative vision as tailors, jewellers and textile makers with real dedication. Their willingness to make sacrifices in terms of working long hours is very inspiring. Some of them are juggling another job in order to fund their creative dream, and they manage to keep their hope alive even when times are hard.

How do we work out what our personal dream is? Sometimes we can look back and see that an early experience, or the encouragement of a parent or a teacher, sparked a passion which has lasted a lifetime. Sometimes the origin is lost in time. Either way my observation is that the unfolding of a personal dream does not develop in a nice, neat linear pattern with one step leading to

the next in an uninterrupted sequence until the goal is arrived at exactly as planned.

An image I find more useful is to think of stepping stones. Do I step here, or shall I go there? If I say "yes" to this possibility, will I also be saying "no" to that possibility? Is this really where I want to go, or is it a dead end leading nowhere? With each little step the shape our lives is taking becomes a little more clear and what was unknown, unformulated, begins to be known, formulated.

The stories of the women in this issue illustrate the role of good mentors in enabling them to discern their dreams and to achieve them. Their success reminds me of the truth that all of us need the support of people who love us and believe in us, allowing us to flourish as unique individuals without claiming the glory for their own.

Augusta Wolff is a UKCP registered psychotherapist. [www.awcounselling.co.uk](http://www.awcounselling.co.uk). If you would like her to respond to a problem you are facing, please email her at [augusta@thesohosociety.co.uk](mailto:augusta@thesohosociety.co.uk). Unfortunately Augusta is not able to enter into correspondence with readers.

## 60 SECOND INTERVIEW / NEB MACIVER

**Neb MacIver**  
Close up Magician & Mind Reader



**Name?** Neb  
**Age?** 36  
**Star Sign?** Libra  
**How long have you lived in Soho?**  
3 years  
**Best thing about living in Soho?**  
The atmosphere and having good friends drop by when they are in the area, which makes London seem more like a small town.  
**Worst thing about living in Soho?**

The guy who hits about at 3am with a 1000w speaker on a trolley with wheels.

**When you were little, what did you want to be when you grew up?**

Michael J Fox

**What would you save if your house was on fire?**

I would try and save the house! But failing that Laptop, Hard Drives and my Guitar.

**What's in your wallet/handbag?**

My Picturehouse Central Membership Card! Other cinemas are available.

**It's your last meal ever; what 3 courses do you choose?**

Garlic Bread, Macaroni Cheese, Ice Cream and Chocolate Cake.

**Favourite book?**

So many, at the moment it's Happy by Derren Brown which is all about Stoic philosophy.

**What's the soundtrack to your day?**

Christine and the Queens and Audiobooks.

**Who is the person that most inspires you?**

Changes a lot but at the moment its Miriam Margolyes.

**What are you afraid of?**

Miriam Margolyes

**Who are your 5 dream dinner guests?**

Barry Humphries, Michael J Fox, Roald Dahl, Miriam Margolyes, Heloise Letissier.

**Have you ever stolen anything?**

For a whole year working at the Disney Store no-one suspected that I was the notorious "Jellypop Thief". In order to avoid suspicion I purposely led the investigation myself, and to this day I still feel very proud.

**Where's the wildest place you've ever been naked?**

Inside my mothers womb.

**Do you play any instruments?**

I played in a band for a living before being a magician so I play guitar, piano, drums, bass and sing.

**Pets?**

I've long considered a cat but he would almost certainly get abducted by drunk people on Old Compton Street.

**What's in your fridge?**

Spinach, Blueberries, Coconut Milk, Carrots and Yoghurt.

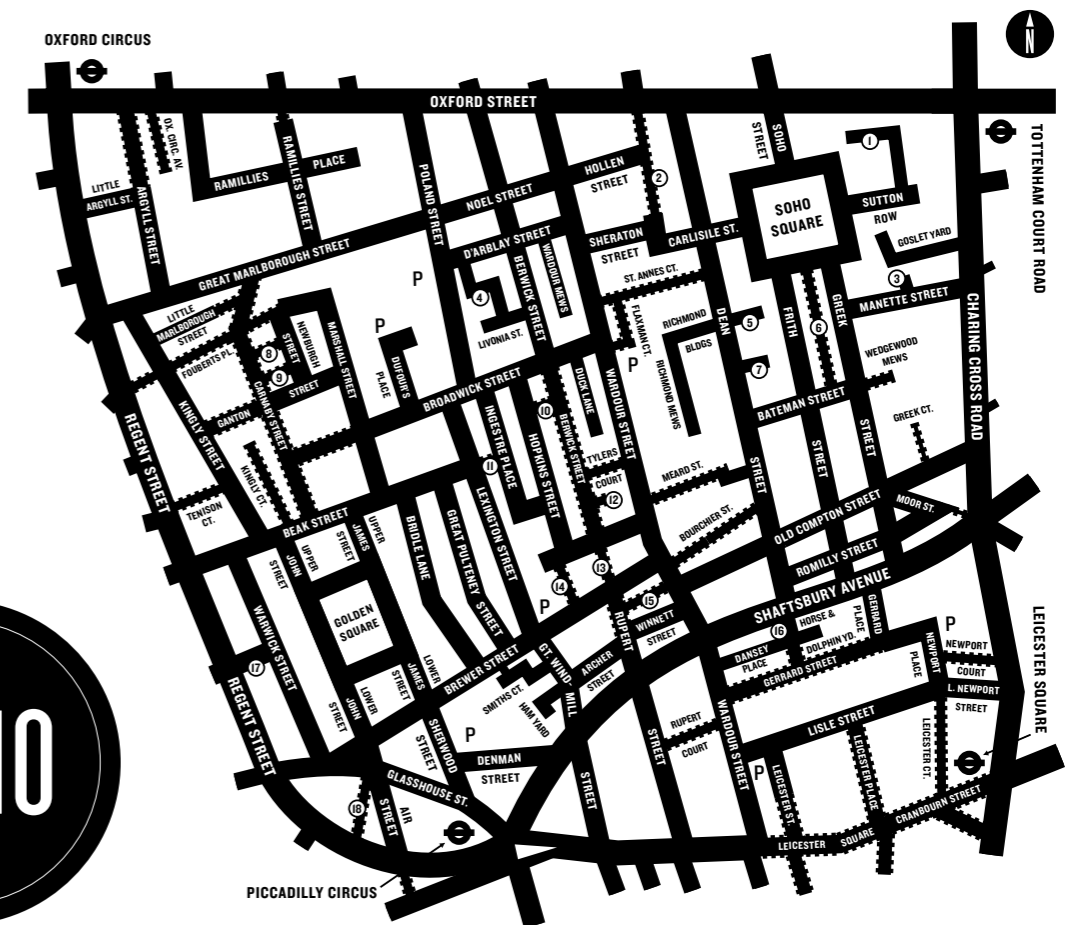
**Cup of tea or Glass of wine?**

Been off the booze for 10 years and don't like Tea so I'll have a coffee please.

[www.nebmagic.com](http://www.nebmagic.com)

## MAP

1. Falconberg Mews
2. Great Chapel Street
3. Orange Yard
4. Portland Mews
5. Chapone Place
6. Batemans Buildings
7. Royalty Mews
8. Lowndes Court
9. Marlborough Court
10. Kemps Court
11. Silver Place
12. Blore Court
13. Walkers Court
14. Greens Court
15. Tisbury Court
16. Macclesfield Street
17. Regent Place
18. Quadrant Arcade



## DIRECTORY

### General

#### The Soho Society

St Anne's Tower,  
55 Dean Street, W1D 6AF  
T: 020 7439 4303  
E: [admin@thesohosociety.org.uk](mailto:admin@thesohosociety.org.uk)  
[www.thesohosociety.org.uk](http://www.thesohosociety.org.uk)  
Twitter & Instagram:  
[@sohosocietyw1](https://twitter.com/sohosocietyw1)  
[facebook.com/thesohosociety](https://facebook.com/thesohosociety)

#### Soho Housing

4th Floor, 120 Charing Cross Rd,  
WC2H 0JR  
T: 020 7557 7400  
[www.sohoha.org.uk](http://www.sohoha.org.uk)

#### Museum of Soho

[www.themuseumofsoho.org.uk](http://www.themuseumofsoho.org.uk)  
E: [info@themuseumofsoho.org.uk](mailto:info@themuseumofsoho.org.uk)

#### Soho Radio

22c Great Windmill Street,  
London W1D 7LD  
[www.sohoradiolondon.com](http://www.sohoradiolondon.com)  
E: [info@sohoradiolondon.com](mailto:info@sohoradiolondon.com)

### Soho Neighbourhood Forum

[www.planforsoho.org](http://www.planforsoho.org)

#### Gerry's Wines & Spirits

74 Old Compton St,  
W1D 4UW  
T: 020 7734 2053  
[www.gerrys.uk.com](http://www.gerrys.uk.com)

#### Soho Square General Practice

1 Frith St, W1D 3HZ  
T: 020 3405 6570  
[www.sohosquaregeneral-practice.co.uk](http://www.sohosquaregeneral-practice.co.uk)

#### House of St. Barnabas

1 Greek Street  
London W1D 4NQ  
T: 020 7437 1894  
E: [contact@hosb.org.uk](mailto:contact@hosb.org.uk)

#### Employment academy enquiries

E: [employmentacademy@hosb.org.uk](mailto:employmentacademy@hosb.org.uk)

#### Membership Enquiries

E: [member@hosb.org.uk](mailto:member@hosb.org.uk)

### Artisans

#### Molly Rae Withers

[@mollyraewithers](mailto:@mollyraewithers)

#### Montague Ede

76 Brewer Street, W1F 9TX  
T: 0203 6745341  
[www.montagueede.com](http://www.montagueede.com)  
Deema Abi-Chahine  
[www.deema.co.uk](http://www.deema.co.uk)

#### D.M. Buttonholes

11b Wardour Mews  
D'arblay Street, W1F 8AN  
T/F: 020 7437 8897  
E: [dmbuttons@aol.com](mailto:dmbuttons@aol.com)  
[www.dmbuttons.co.uk](http://www.dmbuttons.co.uk)  
Mon - Fri, 7.30am - 3pm

#### Georgina Clark

The Meraki Studios  
[www.themerakistudios.co.uk](http://www.themerakistudios.co.uk)  
Instagram: [@meraki.studios](https://www.instagram.com/meraki.studios)

#### Dominique Toucheteau

[www.dominiquetoucheteau.com](http://www.dominiquetoucheteau.com)

### Art Galleries

#### Riflemaker Gallery

79 Beak Street, W1F 9SU  
Mon - Fri, 11am - 7pm  
Sat, 12pm - 6pm

#### Lights of Soho

35 Brewer Street, W1F 0RX  
Mon - Sat, 10am-6pm

#### Unit London

147 - 149 Wardour Street, W1F 8WD  
Mon - Sun, 11am - 7pm

#### Andrew Edmunds

46 Lexington Street, W1F 0LP  
Mon - Fri, 10am-6pm

#### Frith Street Gallery

17 - 18 Golden Square, W1F 9JJ  
[www.frithstreetgallery.com](http://www.frithstreetgallery.com)

#### The Photographers' Gallery

16 - 18 Ramillies St, W1F 7LW  
[www.thephotographers-gallery.org.uk](http://www.thephotographers-gallery.org.uk)

# THE SOHO SOCIETY INVITES YOU TO JOIN US FOR OUR ANNUAL GENERAL MEETING.

The Soho Society AGM  
6.30pm, Thursday, 27 April '17  
The Community Hall, St Anne's Church  
55 Dean Street, London W1D 6AF

The Soho Society  
A company limited by guarantee  
registered in England No. 07899282  
Reg UK Charity No. 1146589

Minutes of the 2016 AGM and reports  
for the year 2016 will be received.  
There will also be elections with several  
vacancies on the Board of Directors.

Nomination forms will be available  
from The Soho Society's office, email:  
admin@thesohosociety.org.uk or our  
Facebook page.



We need volunteers to help distribute the Soho Clarion, a few hours each quarter will make all the difference, if you can help please email admin@thesohosociety.org.uk

## CONTRIBUTORS



The Soho Clarion is edited  
by Clare Lynch.

Some of our contributors from  
left to right: Nina, David, Leslie,  
Clare, Lisa, Iona,

**Steve Chambers**  
Planning Advisor.

**Nina Davis**  
Writer, performer and presenter  
of @whatsoffstage on Soho Radio,  
Friday 9-10am.



**David Evans**  
Chair of the Soho Society

**David Gleeson**  
Vice Chair of the Soho Society,  
Chair of Licensing Group and  
Soho resident.

**Leslie Hardcastle OBE**  
Retired controller of the British  
Film Institute, South Bank.  
President of the Soho Society.

**Wendy Hardcastle**  
Soho resident.



**Michael Heath**  
Hack Cartoonist.

**Clive Jennings**  
Director of the Chart Gallery  
and National Print Gallery.

**Clare Lynch**  
Soho resident.

**Andrew Murray**  
Kemp House Residents  
Association, Baptist minister  
and Soho resident.

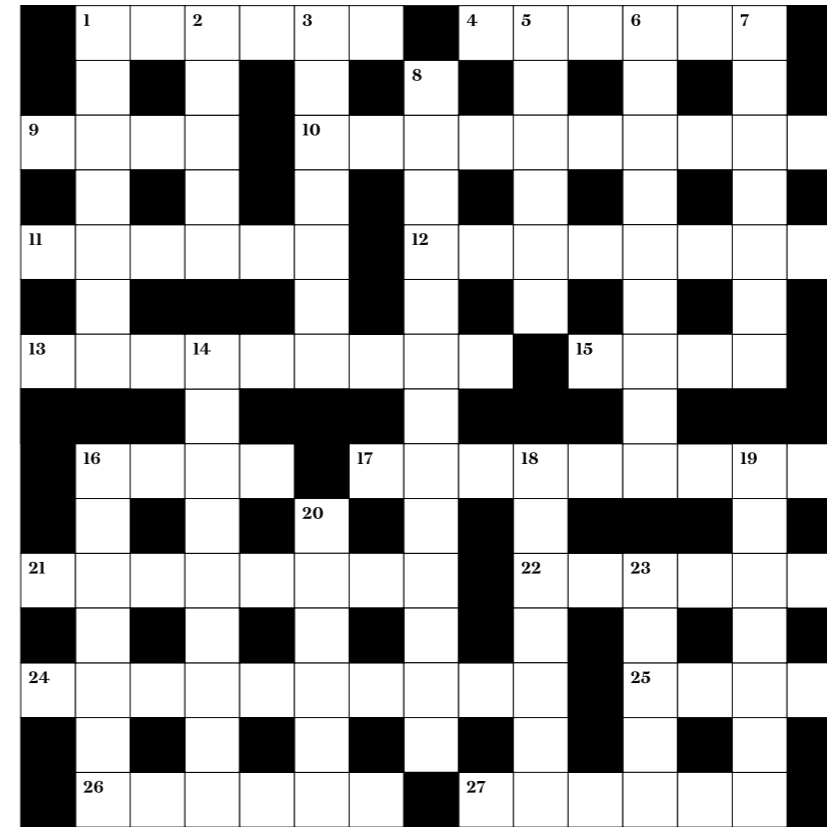


**Tony Shrimplin**  
Director of the Museum  
of Soho and Soho resident.

**Daniel Whomes**  
Soho Society  
Committee member.

**Iona Wolff**  
Freelance photographer  
and Soho resident.

**Alex Wright**  
Graphic designer.



The Vintage House of 42 Old Compton Street has generously donated a bottle of Champagne as the prize for this competition. The first correct entry to be pulled from a hat will win the prize. For the answers please visit thesohosociety.org.uk

### Across

- 1, 9. Slit corner (6, 4)
- 4. Throws out and discards with no right (6)
- 9. See 1 across
- 10. Announcer creates mix-up after returning rent (10)
- 11. Pacific island beachwear? (6)
- 12. See 13 across
- 13, 12. No heavyweight having a box after a slander at her behind (2, 5, 2, 1, 7)
- 15. With an additional sign (4)
- 16, 25. Hit connection for fastener (4, 4)
- 17. Extra to get in to party without leader (9)
- 21. Goes down to note key objectives(8)
- 22. Underwear instructions (6)
- 24. I get confused with glider ribs for airships (10)
- 25. See 16
- 26. Surprising glee at small bird of prey (6)
- 27. Notable example of speech (6)

### Down

- 1. Babies' footwear that is in chemist shop (7)
- 2. Fountain reversing green current (5)
- 3. Going after East German, ornate bird (7)
- 5. Sailor noisily consumed kind of potato (6)
- 6. Wildly calls this as they take money? (4, 5)
- 7. Spits right into garden in South East before going South (7)
- 8. Six ring at this when everything must go (9, 4)
- 14. Putting it back stops rickety fencing causing harm (9)
- 16. Mice she scatters in nightdress (7)
- 18. European voice in my residence (7)
- 19. Well-bred get charged again (7)
- 20. Genie upset about noisy starting motor (6)
- 23. Reorder oil and go to frozen home (5)

## JOIN THE SOHO SOCIETY

Name \_\_\_\_\_

Address \_\_\_\_\_

Email \_\_\_\_\_

Telephone \_\_\_\_\_

### Membership type

Standard £20 pa

Concession £10 pa

Life (individuals only) £250

Business £100 pa

Small business £30 pa

(max 10 employees)

Payment by Standing order \_\_\_\_\_

To (name of bank) \_\_\_\_\_

Address of branch \_\_\_\_\_

Sort code \_\_\_\_\_

Account name \_\_\_\_\_

Account Number \_\_\_\_\_

Please pay to the order of

The Soho Society (address above)

Acc no. 13609987 - Sort Code 20-10-53

Barclays Bank plc, Tottenham Ct. Rd. W1

a subscription of £\_\_\_\_\_ immediately and

thereafter on the same day each year until

further notice. Please cancel all previous

orders in favour of The Soho Society.

Signed \_\_\_\_\_

Date \_\_\_\_\_

### Answers to issue 166 crossword



# West End COMMUNITY TRUST



We would like to thank all our generous sponsors who have made our work possible this year in supporting the Soho Community :-



www.wect.org.uk viola@westendcommunitytrust.org.uk Tel: 07502 106713  
Charity registration number 1138467 Company Limited by Guarantee registration number 7175202

## Watsons Pharmacy 屈臣氏藥房

Watsons Pharmacy has been established for over 35 years in the Soho area. Our aim is to provide a service for our local community.

1 Frith Street, London W1D 3HZ  
T. 020 7437 2270 F. 020 7287 9358  
E. watsons.charles@gmail.com  
E. watsons.sale@hotmail.co.uk



- |   |  |   |
|---|--|---|
| <p><b>Medicine and Appliances Dispensing</b><br/>藥單配藥服務</p> <p><b>Repeat Dispensing</b><br/>重複藥單服務</p> <p><b>Healthy Lifestyle Advice and Promotion</b><br/>健康生活諮詢及推廣</p> <p><b>Medicine Disposal</b><br/>安全處置藥物</p> <p><b>Electronic Prescription Service (Eps)</b><br/>電子藥單配藥服務</p> | <p><b>Emergency Hormonal Contraception Service</b><br/>緊急避孕服務 (事後避孕藥)</p> <p><b>Stop Smoking Service</b><br/>戒煙服務</p> <p><b>Minor Ailment Service</b><br/>輕微疾病諮詢服務</p> <p><b>Needle and Syringe Exchange Service</b><br/>針筒交換回收服務</p> <p><b>New Medicine Service (NMS)</b><br/>新處方使用跟進服務 (只限哮喘、糖尿病、高血壓、薄血病患)</p> | <p><b>Medicine Use Review (MUR)</b><br/>藥物使用跟進服務</p> <p><b>Health Check Service (Blood pressure)</b><br/>健康檢查服務 (量血壓)</p> <p><b>Home Delivery Service (Within 1 mile)</b><br/>送藥服務 (一里之內)</p> <p><b>Supervised Medication Consumption</b><br/>藥物使用監管</p> <p><b>Chinese Language Access Service</b><br/>中文翻譯服務 (只限於藥物閱讀)</p> |
|---|--|---|

### 營業時間

星期一 上午九時 至 下午六時三十分  
星期二 上午九時 至 下午六時三十分  
星期三 上午九時 至 下午六時三十分  
星期四 上午九時 至 下午六時三十分  
星期五 上午九時 至 下午六時三十分  
星期六 休息  
星期日 休息

Opening hours  
Monday to Friday 9:00 am – 6:30 pm  
Saturday and Sunday closed



20th Birthday  
Thank you Soho!

Randall & Aubin  
14 - 16 Brewer Street  
London W1F 0SQ  
Tel: 0207 287 4447  
www.randallandaubin.com

# GERRY'S

International Wines and Spirits

74 Old Compton Street  
London W1D 4UW

Telephone  
020 7734 2053  
020 7734 4215

If it's drinkable it's here

## For more than 140 years

A. France & Son Funeral Directors

An Independent Family Firm  
has been connected with Soho and the  
Seven Dials. We are still nearby at  
45 Lamb's Conduit Street, London WC1



Funerals may be arranged at our office, or in  
the privacy of your home if preferred.

Golden Charter Pre-arranged  
Funeral Plans are available

Tel: 020 7405 4901

E-mail: france@ukonline.co.uk

Work in central London but can't afford to live here? Help us find out more about people like you by answering our survey

[www.sohoha.org.uk/survey](http://www.sohoha.org.uk/survey)



Homes local people can afford in the heart of the city

[www.sohoha.org.uk](http://www.sohoha.org.uk)



**MEDITERRANEAN CAFE**

Established 1987  
18 Berwick Street  
London W1F 0HP  
Mon - Sat: 9am-11:45pm  
Sunday: 9am-10:30pm

Tel: 020 7437 0560  
@MedCafeSoho  
email: [info@medcafesoho.co.uk](mailto:info@medcafesoho.co.uk)  
<http://www.medcafesoho.co.uk>

**FIND US ON  
BERWICK ST  
MARKET IN  
LONDON'S SOHO**

Call 020 7766 9000



Expertise Delivered



The UK's leading professional recruitment consultancy

What Makes Oyster Partnership Different?



The Oyster Difference

Our entire business is built on delivering a truly exceptional service for our clients and candidates. We call it The Oyster Difference - and here's how we do it.

1. Market Intelligence
2. Transparency and Integrity
3. Excellent Communication

Want to discover?

We're ready to Deliver **EXPERTISE**

As property recruitment specialists working across both Public and Private Sectors, we're totally committed to one thing - only ever delivering our clients the right person for the job.

Join the Oyster Academy

Oyster's recruitment business is built around delivering a consistently exceptional service - which means we need exceptional people on our team.

Could you be one of them?

ABOUT US

Oyster Partnership are a specialist property recruitment consultancy, covering both public and private sectors.

Contact us on the following to make the next step in your career:

- Facebook: [Oysterpartnership](https://www.facebook.com/OysterPartnership)
- LinkedIn: [@oysterpartnership](https://www.linkedin.com/company/oysterpartnership)
- Instagram: [@oyster\\_partnership](https://www.instagram.com/oyster_partnership)
- Twitter: [@oysterPartners](https://twitter.com/oysterPartners)

Call us on: **020 7766 9000**

The Spirit of Soho has been captured and bottled...

Encapsulating the rich creativity and unique lifestyle of the effervescent London district, The King of Soho Gin combines citrusy grapefruit with classic juniper to create a perfectly balanced London Dry Gin. It was created as a tribute to the original 'King of Soho', Paul Raymond, by his son Howard. The bohemian design of the bottle represents both the past and present of Soho life and is a celebration of the Spirit of Soho.

[f](https://www.facebook.com/TheKingofSoho) [i](https://www.instagram.com/TheKingofSoho) [v](https://www.youtube.com/channel/UC...) TheKingofSoho

The King of Soho Gin is available from top bars, online retailers and a wide range of popular outlets nationwide. For further information visit [KingOfSohoDrinks.com](http://KingOfSohoDrinks.com) or call 01932 252100



# MAN SPILLS LATTE ON MAC!

## JIGSAW24 REPAIRS ON HAND TO MOP UP

Just round the corner in Golden Square – no appointment necessary!



Accredited in and out  
of warranty repairs



Full solutions and services  
for creative workflows



Hands-on demos of the  
latest audio and video kit



The latest product  
and workflow events



Slap bang in the  
heart of Soho

# JIGSAW<sup>24</sup>

Drop in: to 8 Golden Square, Soho W1F 9HY • Call: 03332 409 285

Email: [soho@jigsaw24.com](mailto:soho@jigsaw24.com) • Visit: [jigsaw24.com/soho](http://jigsaw24.com/soho) • Check out all our events at Soho: [jigsaw24.com/events](http://jigsaw24.com/events)

Opening times: Monday - Friday: 9am – 5.30pm • Saturday - Sunday: Closed



Authorised  
Service Provider